

The background features a dark, muted teal color with a pattern of interlocking gears. A lightbulb is depicted within one of the gears, and a question mark is visible on the right side of the image. The text is overlaid on this background.

WHERE IS YOUR MINDSET AT?

WITH KELLY EDWARDS



THE POWER OF
YET...

The teacher lifecycle

- Loosely taken from Michael Hubermans research (1981, 2001)
- Novice
- Mid career
- Later career

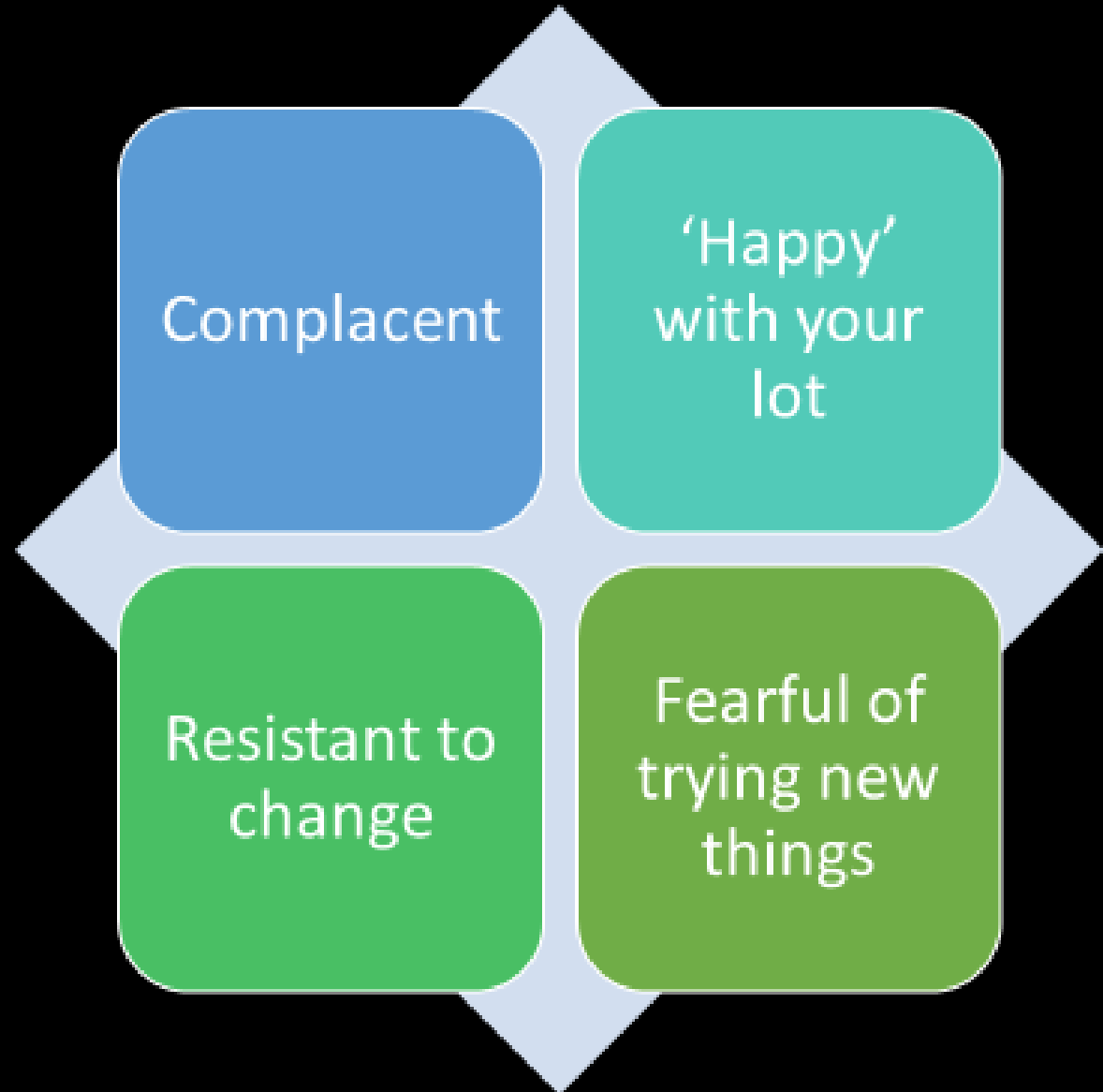








Are you?





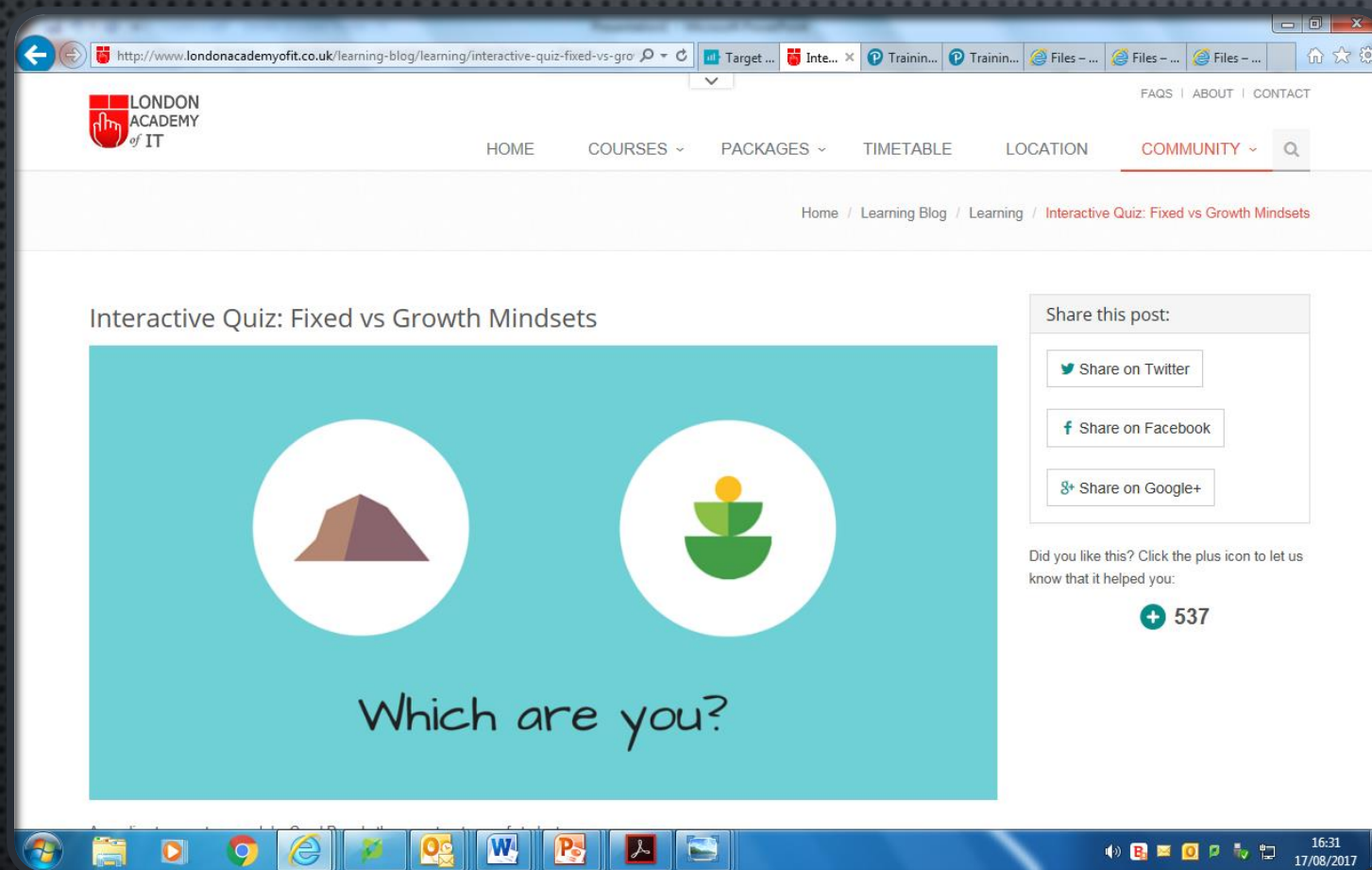
Or are you?

- Looking for promotion
- Diversifying within your organisation
- Looking to support others
- Finding a new challenge
- Expanding your toolkit

HOW DID THIS MAKE YOU FEEL?

- FEARFUL
- DIDN'T WANT TO LOOK FOOLISH
- NO CHANCE YOU ARE GOING TO DO THIS

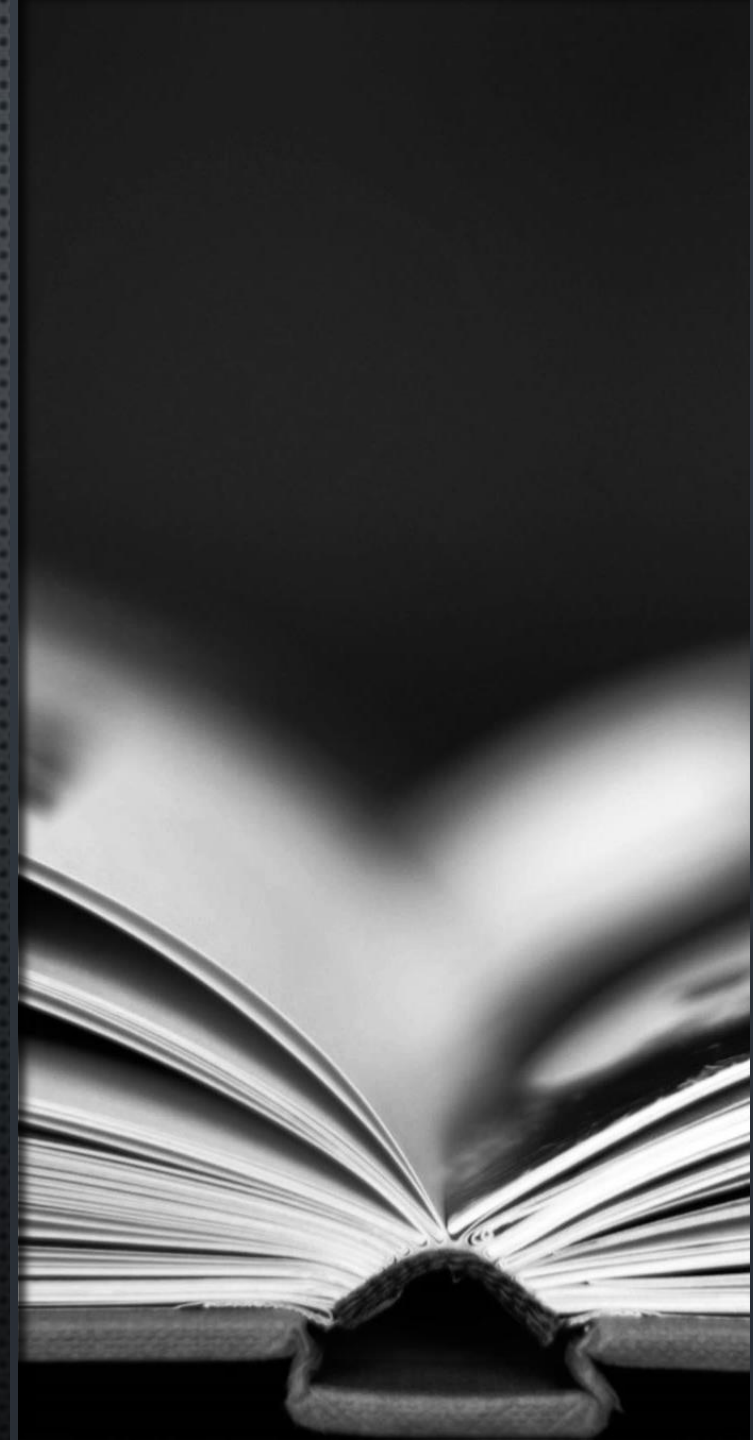




GOOGLE - LONDON ACADEMY OF IT – GROWTH MINDSET

CAROL DWECK

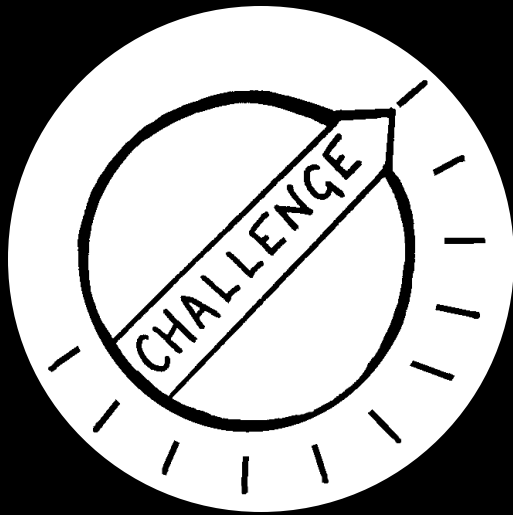
- 'FOR DECADES I'VE BEEN STUDYING WHY SOME PEOPLE SUCCEED WHILE PEOPLE, WHO ARE EQUALLY TALENTED, DO NOT. AND OVER THE YEARS I'VE DISCOVERED THAT PEOPLES MINDSETS PLAY A CRUCIAL ROLE IN THIS PROCESS'

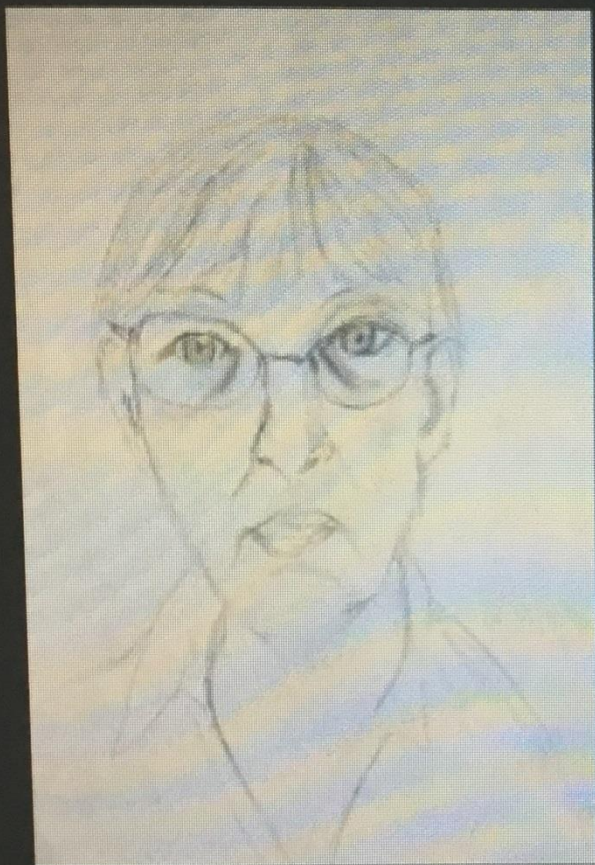




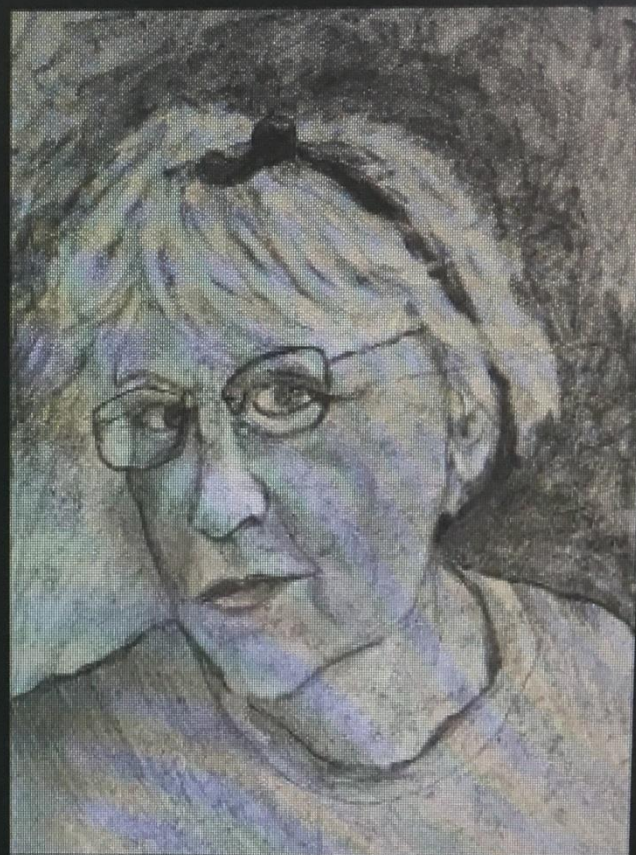
CAROL DWECK – NEUROPLASTICITY

- **FIXED MINDSET**
 - INTELLIGENCE IS A FIXED TRAIT.
 - YOU CAN'T CHANGE IT.
 - SKILLS ARE BORN
- **GROWTH MINDSET**
 - YOU CAN GROW YOUR INTELLIGENCE THROUGH EFFORT.
 - THEY HAVE DEVELOPED AND GROWN THEIR ABILITY
 - SKILLS ARE BUILT

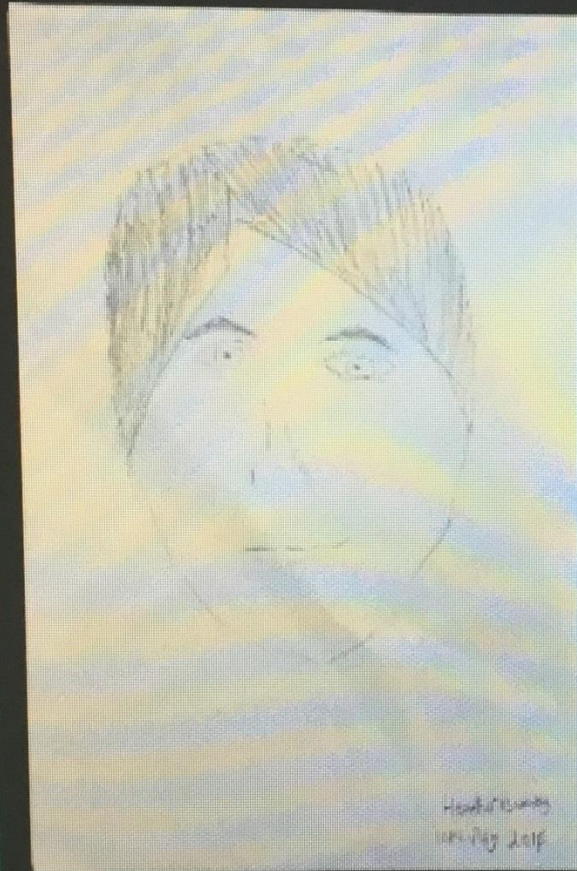




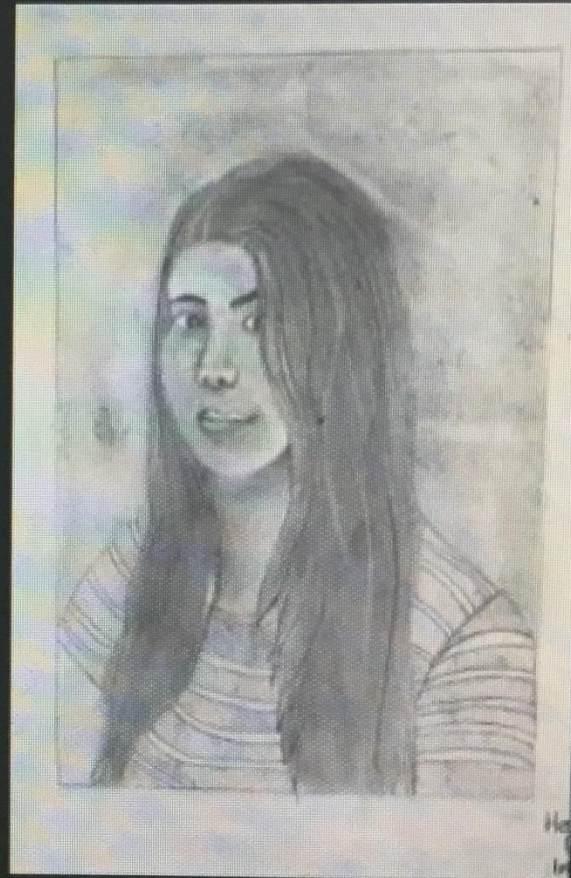
Monday



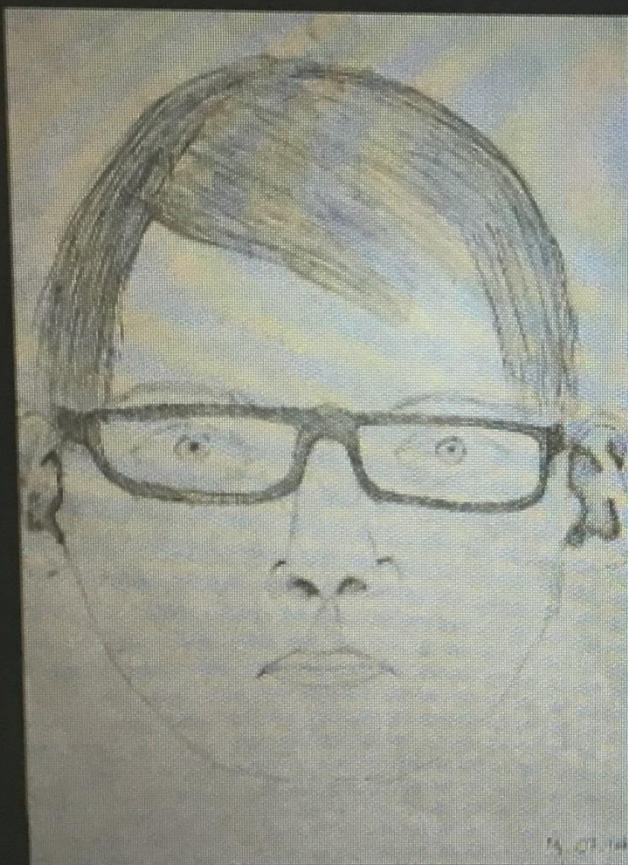
Thursday



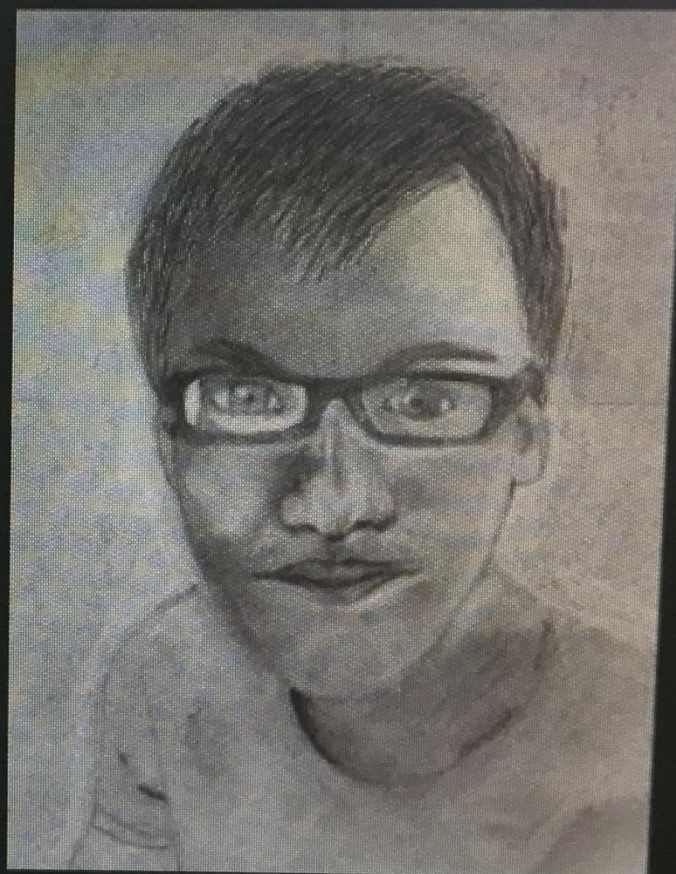
Monday



Thursday



Monday



Thursday

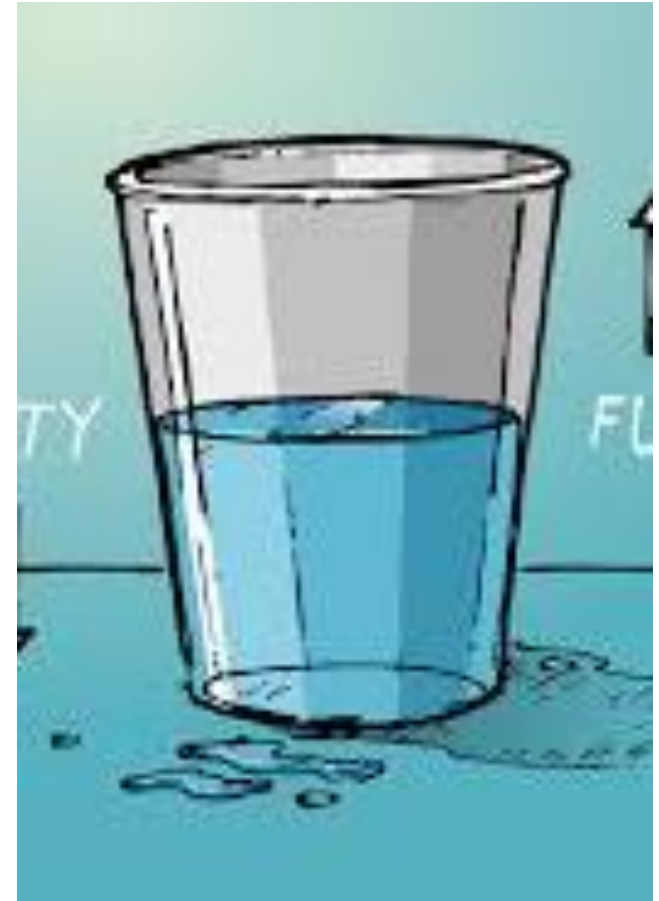
WHAT IS THIS SHOWING?

- 8 HOURS PURPOSEFUL PRACTICE
- KEY INGREDIENTS USED — EFFORT, CHALLENGE, MISTAKES, FEEDBACK
- A POSITIVE APPROACH
- MATTHEW SYED — AUTHOR OF BOUNCE

WHAT DOES THIS MEAN FOR YOU?

- HOW DO YOU BEHAVE/INTERACT WITH —
- YOUR FAMILY?
- YOUR WORK COLLEAGUES?

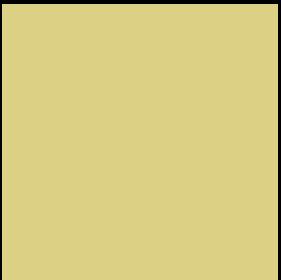
- YOUR STUDENTS?
- PURPOSEFUL PRACTICE
- USING THE KEY INGREDIENTS — EFFORT, CHALLENGE, FEEDBACK, MISTAKES







How do you take on new challenges?



[Adele Video shortened.mp4](#)

AT WORK –
THIS IS THE
INFLUENCE
SOME
TEACHERS
CAN HAVE!

ANY QUESTIONS?

@KELLYED824

