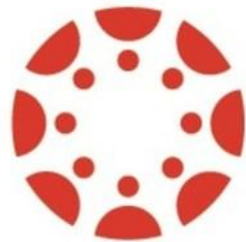


- Utilizing the Instructure Learning Platform

July 10th



CANVAS

- 
- UKI - 245 Customers
 - Nordics - 152 Customers
 - Benelux - 54 Customers
 - Iberia - 56 Customers
 - DACH - 27 Customers

350+ Employees located in Europe

Leadership in the UK

- Regional VP
- VP Strategy
- Sr. Dir. Customer Experience

AWS Data Centres in
Dublin & Frankfurt

R&D & CX in Budapest

- 120 Eng, 16 PM/Design
- VP Eng, VP Product
- Customer Support Team



UK FE team



Matthew McShane
Senior Sales Development



Daniel Hill
Regional Vice President,
EMEA



David Quist
Regional Director, FE



Joe Stafford
Senior Account Executive



Graham Raddings
Solutions Engineer
Manager, EMEA



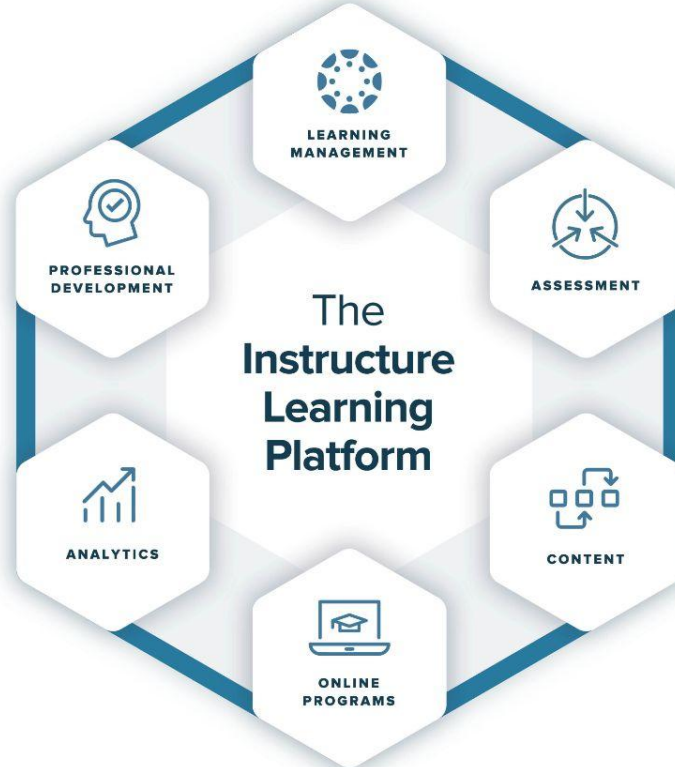
Stephanie Blaszczyk
Senior CS Manager



André Silva
Solutions Engineer

The Instructure Learning Platform

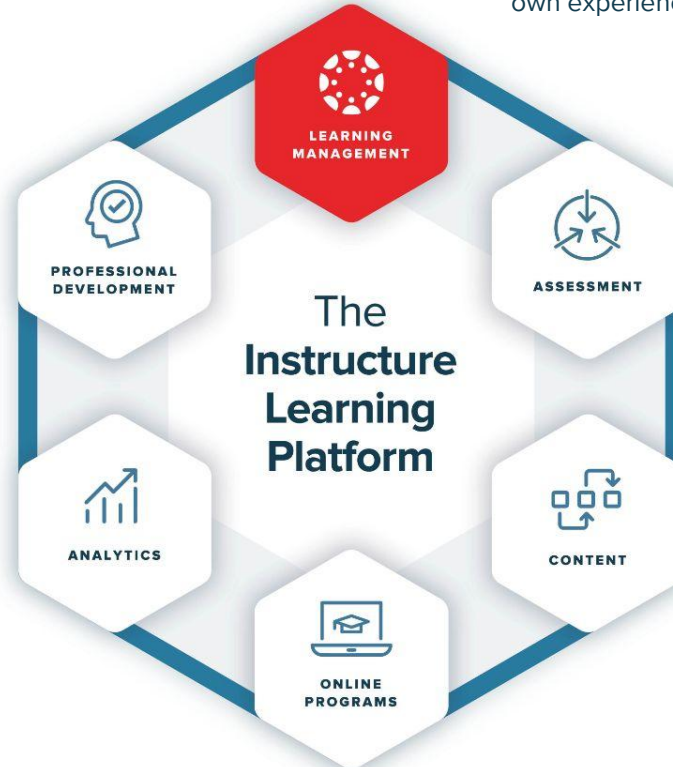
The Instructure Learning Platform helps make learning personal through software, assessment tools, content, professional development, partner technologies, and a million-member-strong user community. Instructure solutions amplify the power of teaching and elevate the learning process, leading ultimately to improved learning outcomes.



Orienting learners and putting them front and center in their own experience.

Learning Management

Canvas LMS is the hub of your digital classroom. Canvas Studio, Canvas Catalog and Canvas **Credentials** offer guided learning journeys and prompt students to demonstrate competency via digital credentials.



Assessment

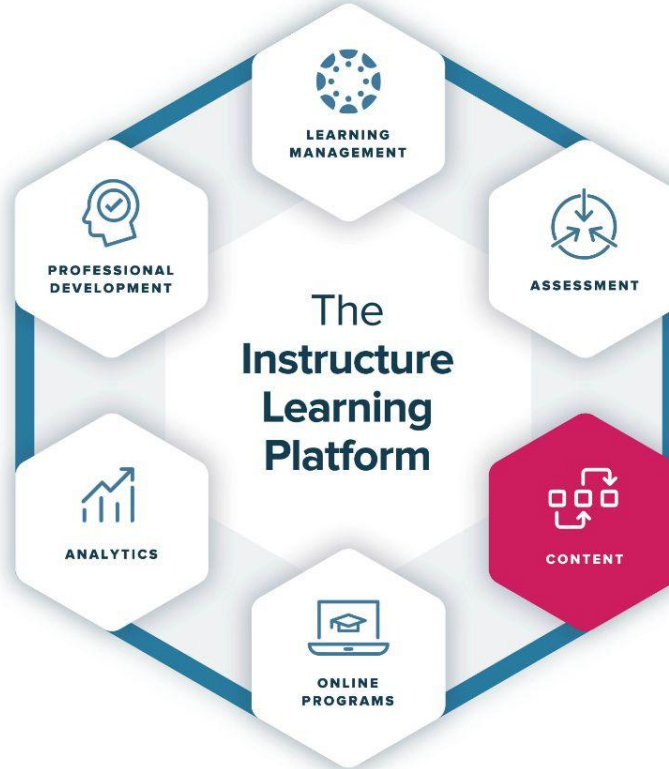
Measure student competency and provide actionable, real-time feedback via Canvas Outcomes. Assess, report on, and improve program effectiveness using Canvas Program Assessment.



Ensuring learners get **immediate, regular, and accessible feedback** measured through timely assessment.

Content

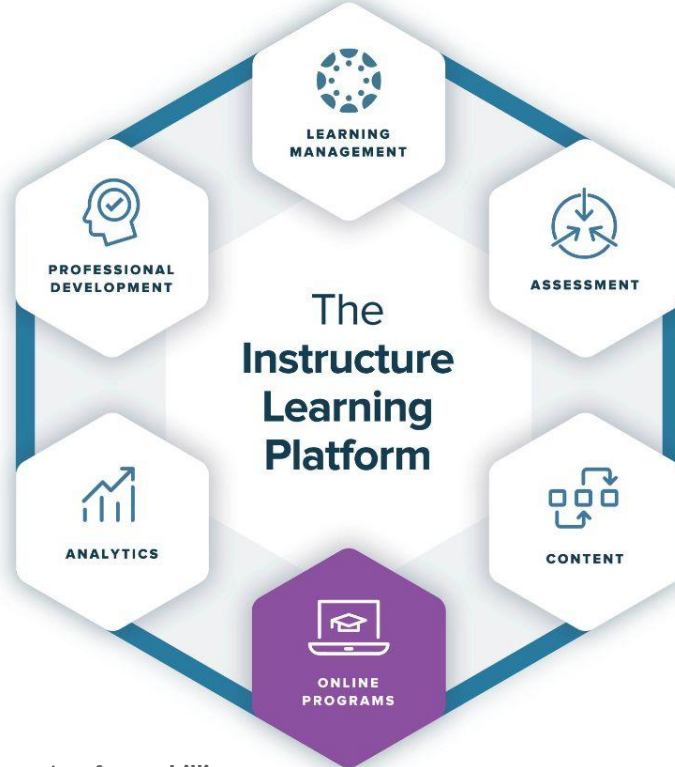
Unparalleled content shared and delivered through Canvas Commons, the Canvas Community, Instructional Design Services and industry-leading partners



Enriching learning with **engaging activities, ubiquitous communication, and** pervasive support.

Lifelong Learning

Deliver innovative programs to non-traditional learners with Canvas Catalog, Canvas LMS, Canvas Credentials and Canvas Pathways.

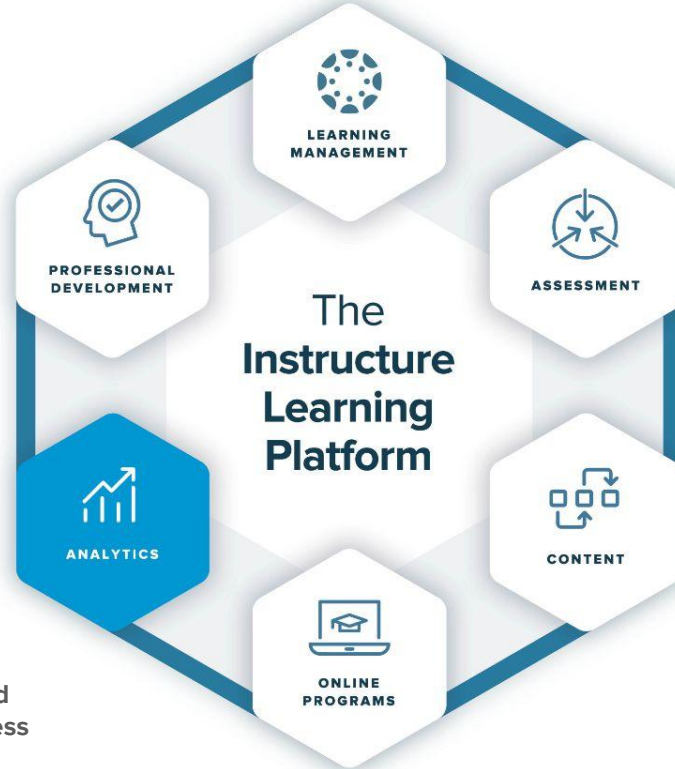


Delivering outcomes-based learning for **reskilling** and **upskilling** non-traditional learners.

Analytics

Analytics built right in Canvas LMS, Canvas Studio and Canvas Catalog support full access to your data through Canvas Data.

Leveraging **data** to **measure, support and ensure student success** and engagement.



Meeting educators and learners where they are with experiences designed to be **easy, extensible, equitable and accessible.**

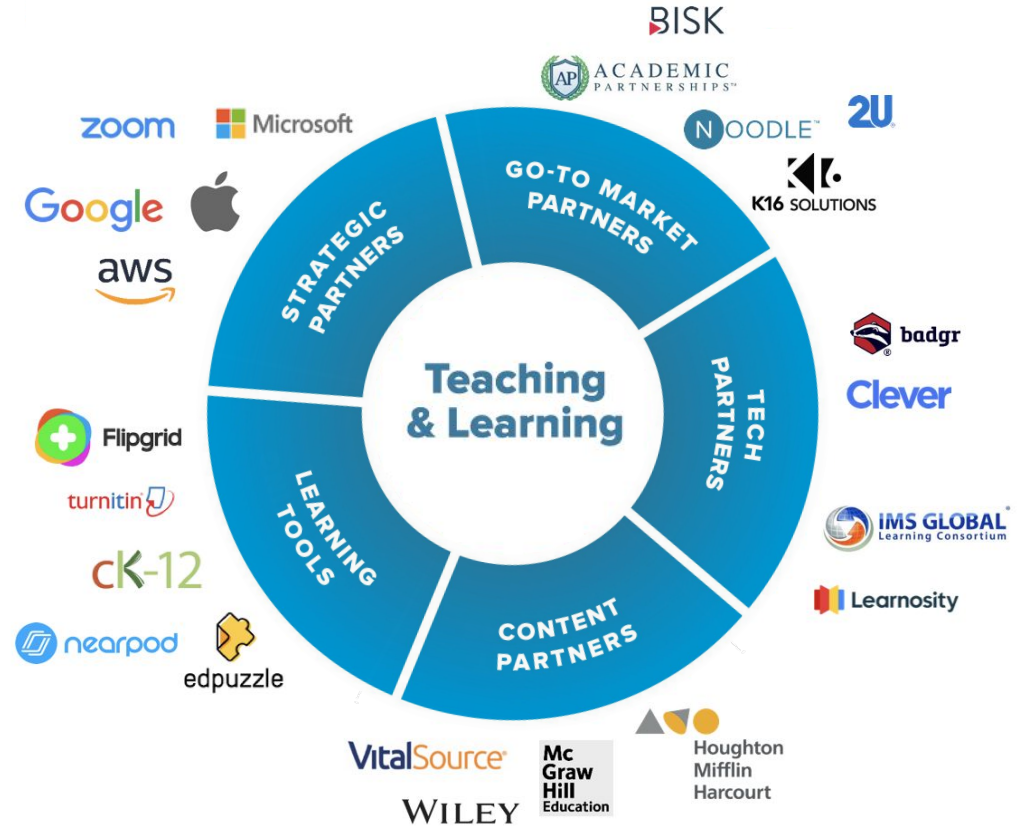
Professional Development

Support lifelong learning by delivering PD through CanvasLMS, engaging with the Canvas Community and with the Canvas Certified Educator program.





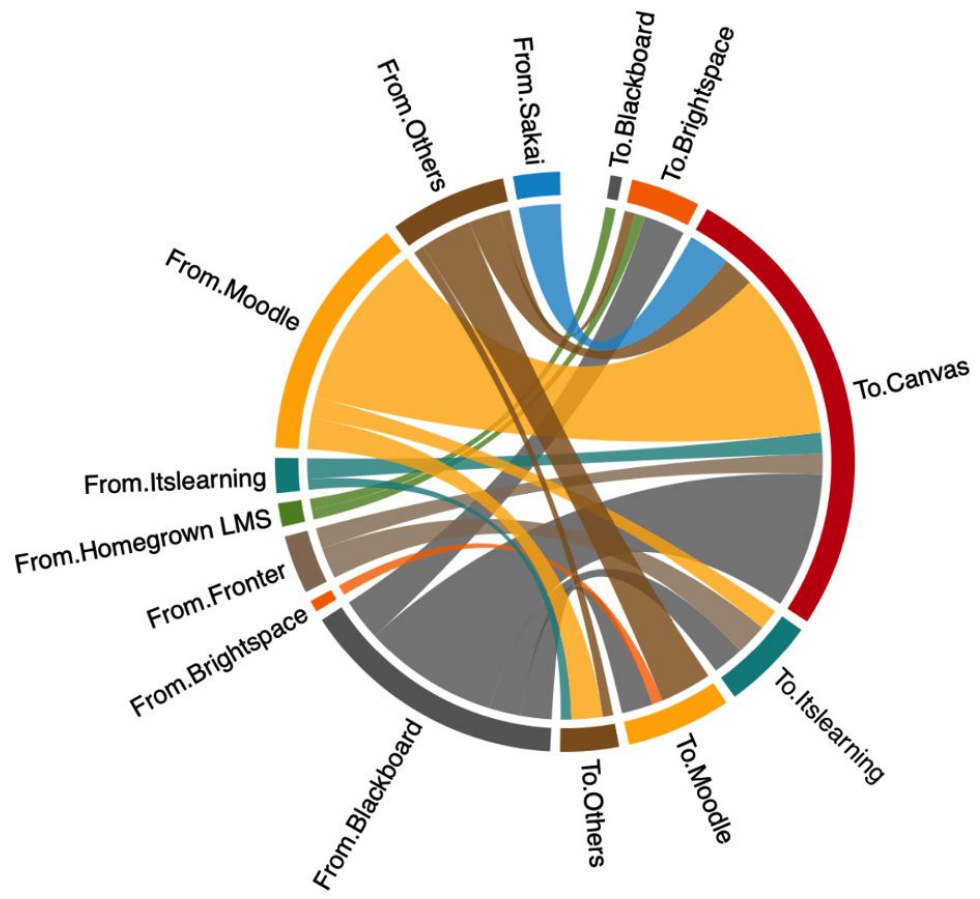
Supporting an Ecosystem of Edtech Partners



Ultimately, the decision for colleges to adopt Canvas is driven by its user-friendly interface, rich feature set, flexibility, collaboration tools, mobile accessibility, strong support, and positive reputation in the education community. These factors collectively contribute to an enhanced teaching and learning experience for both instructors and students, making Canvas an appealing choice for many colleges in the UK.

ChatGPT

Figure 20 - Current Customer Migration from Previous LMS to New LMS for Europe for 2019 - 2021





The benefits of partnering with Instructure

(k)NudgingAI

virtual teaching assistant

With a single click, instructors can—

Assignment Feedback

- ☐ evaluate a student's paper against the grading rubric
- ☐ create personalized, substantive written feedback
- ☐ automatically insert the feedback directly into the comments field

Discussion Replies

- ☐ create a discussion reply specifically tailored to a student's post
- ☐ add contextualization (e.g., "Ask a Question" or "Teach by Example")
- ☐ automatically insert the reply directly into the text editor

Learn More



knudging.com



[linkedin.com/company/k-nudging-llc](https://www.linkedin.com/company/k-nudging-llc)



[youtube.com/@knudging5516](https://www.youtube.com/@knudging5516)

Contact Us

info@knudging.com

801.245.0579

Wrap / Q&A

