

Partner

Google Cloud

Premier Partner

Google for Education



Adaptive Learning with Google in the Age of AI



Email Connect@c-learning.net
www.c-learning.net



Jamie Smith

Executive Chairman



@CloudBusiness9



@Cloudbusiness9

Email Connect@c-learning.net

www.c-learning.net



Steven Hope

CEO



@Hope_Steven

We believe the future will be **sustainable** or not at all, & we're leaders in technology that's helping this **purpose**.

**30+
countries...**

**3000+
clients...**

24 years 4 September 1998

Google!
BETA

c-learning



www.c-learning.net



Technology alone will not improve education, but it can be a powerful part of the solution.”

– Sundar Pichai, CEO, Google



www.c-learning.net



We want to use AI to augment the abilities of people, to enable us to accomplish more and to allow us to spend more time on our creative endeavors.



Jeff Dean

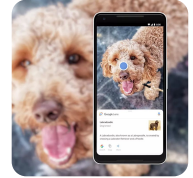
Google Chief Scientist

The multi-colored Google logo.

How many colleges in the UK?



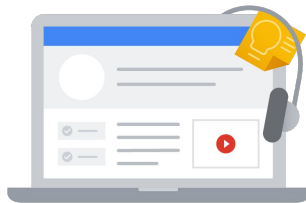
Google is a learning company



Helping everyone in the world learn anything in the world.



Learning for **life**



Learning for **work**



Learning for **college**

learning.google



3 billion

people use Google Workspace,
including businesses, education, and
consumers.

Right now, we're helping

6 million

businesses move into the future.

www.c-learning.net



In today's changing landscape, technology influence touches everything on campus



Technology
is changing



Students
are changing



Institutions
are changing

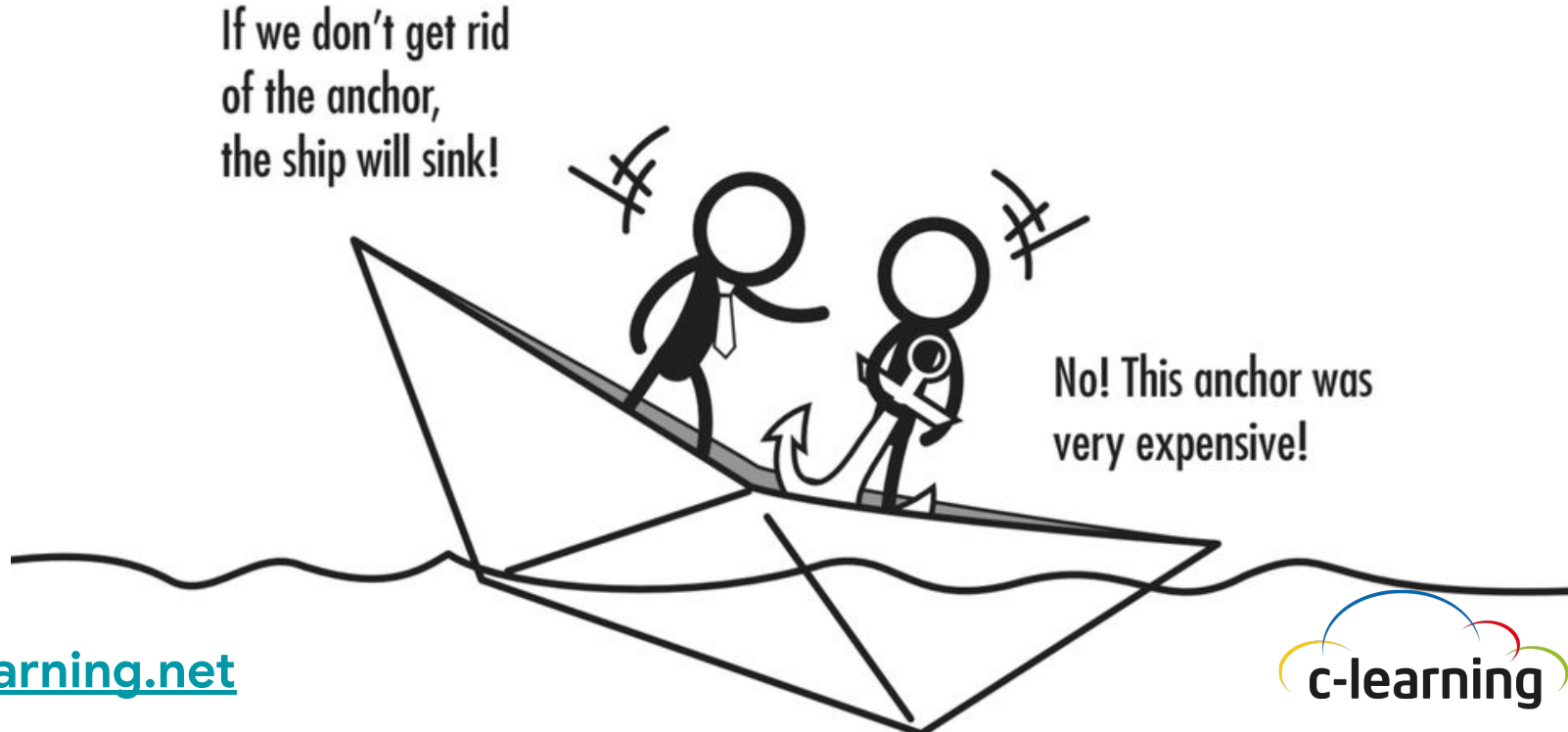


How we teach
is changing

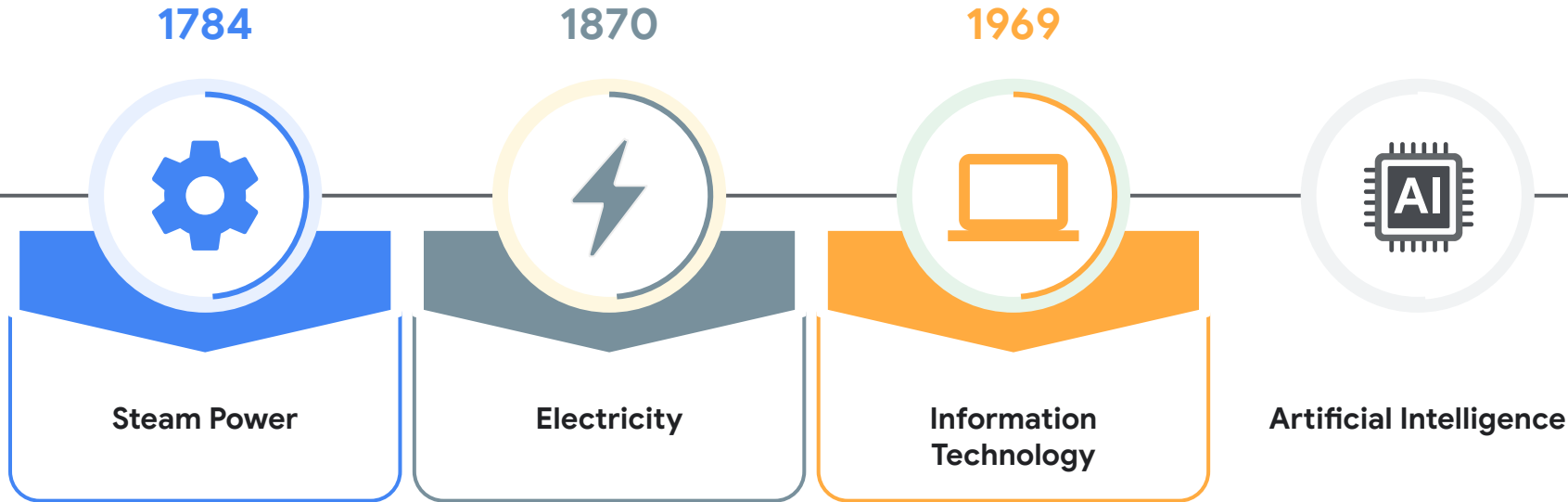


What we learn
is changing

Continual disruption is now business as usual, but the sunk cost fallacy is a powerful thing..



We're in an AI-driven revolution



Confused about AI?
AI is learning too....

*(AI powered photo
stitch failure...)*



AI likes to party.... Alexa likes to play music at 2:30am really really loudly...

(Hamburg police raided a home at 2:30am after neighbours demanded the party was closed down. Only Alexa was home...)



“It wasn’t me, Alexa did it....”

6 Year old and Alexa order a whole lot of stuff...



Use AI wisely, and carefully.



Professor Flunks All His Students After ChatGPT Falsely Claims It Wrote Their Papers

Texas A&M University–Commerce seniors who have already graduated were denied their diplomas because of an instructor who incorrectly used AI software to detect cheating

BY MILES KLEE

MAY 17, 2023

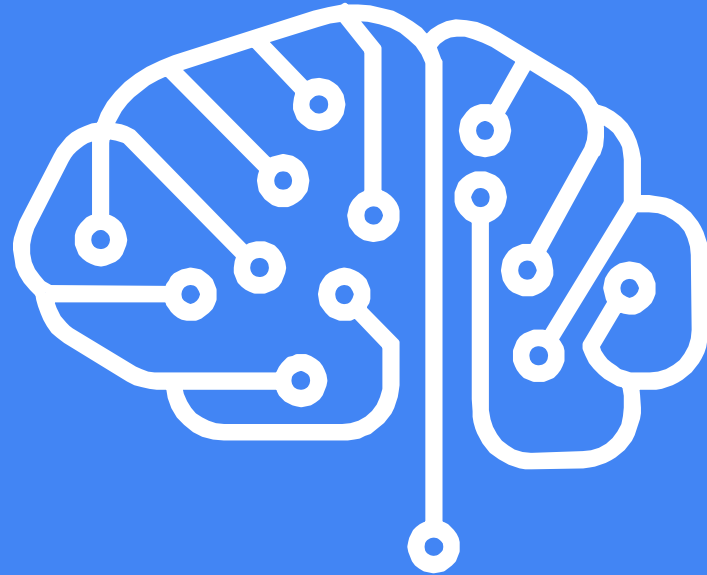
www.c-learning.net



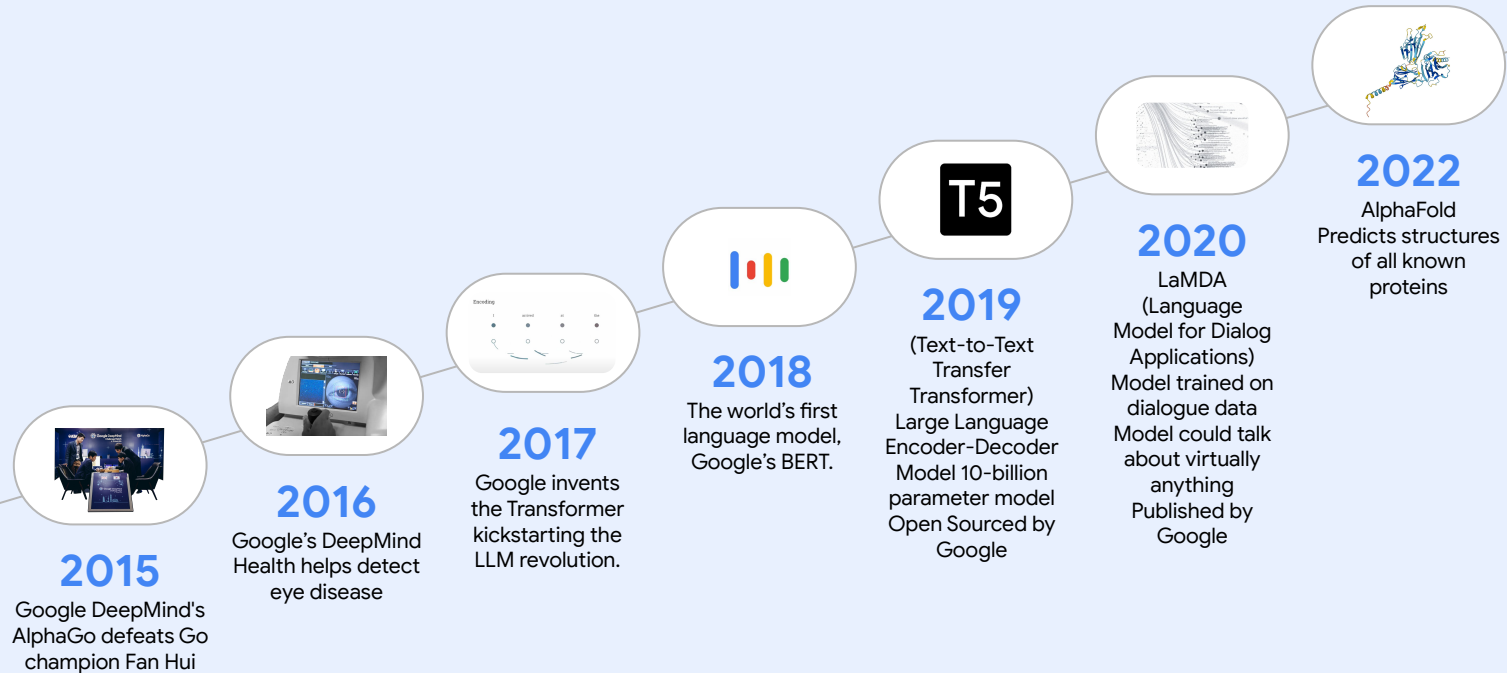
AI and Machine Learning

A.I. is the science of making things smart

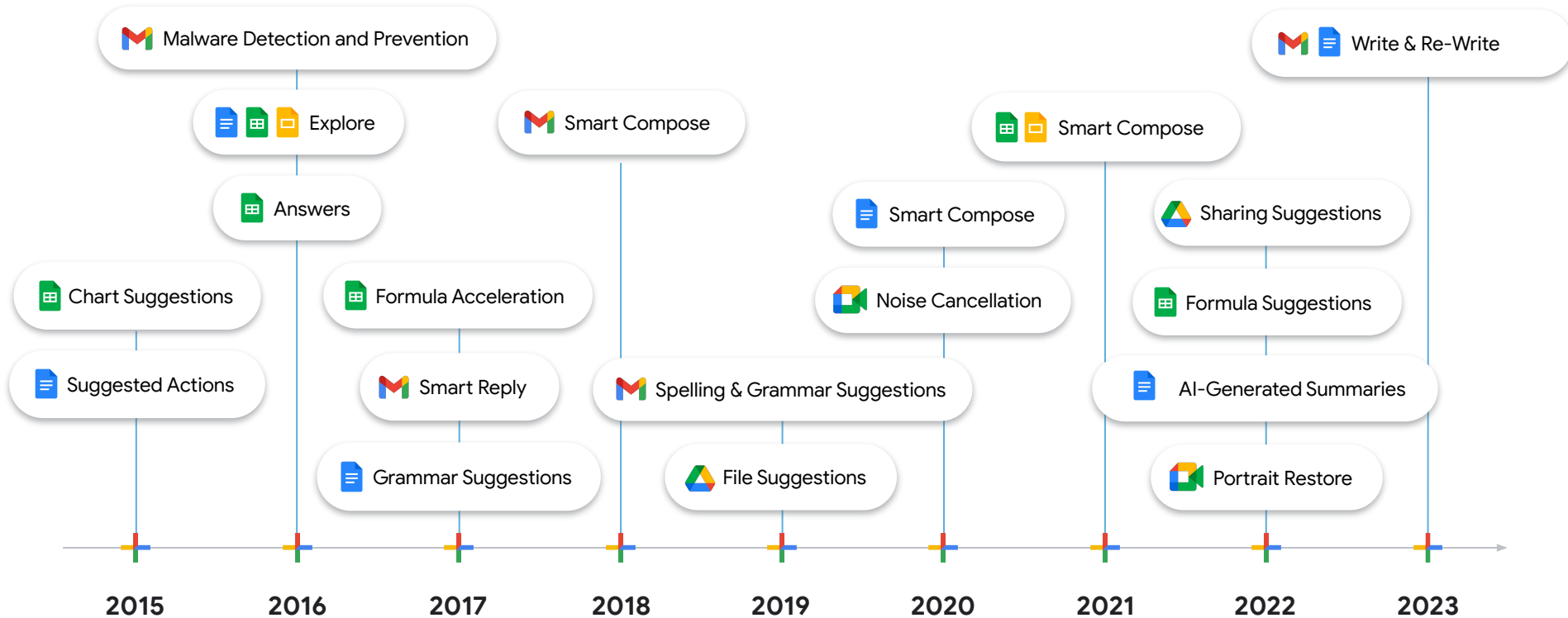
Machine learning is a technique used to develop A.I.



Google is the Pioneer in AI



We've put AI to Work for 3 Billion Users in Google Workspace



Looking to the future, we're building for...



**More personal
learning**



**More
collaborative
and accessible
classrooms**



**Safer digital
learning
environments**

teacher,
College staff &



A new breed of student...
the cloud worker (7.25
*million people in the UK now
work in the 'gig economy'.*)



Expects to work securely from
any device or location



Values speed, convenience,
collaboration and fluidity of work

AI is used in our everyday lives with Google products



Asking Google Assistant today's weather



Unlocking your phone with facial-recognition technology



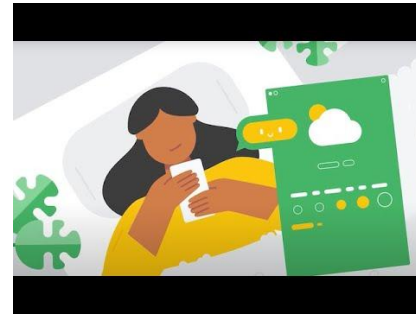
Opening Google Maps to find the most efficient route to your destination



Communicating with others that have a different native language using Google Translate

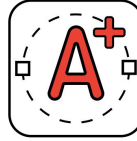


Listening to a YouTube playlist of your favorite songs



Developing AI for a
more equitable world.





We believe AI technology can help provide scaled, individualised support to enhance education because

teaching and learning are
personal journeys.

Google's approach to applying AI in education

We recognise that the use of AI technology in education can raise important challenges and we aim to address those thoughtfully.

With our adaptive learning technology, we're committed to delivering edtech tools that are built responsibly.

www.c-learning.net



Your **privacy is protected** by responsible data practices, and we stay **up to date with evolving legislation**.

[Privacy](#)



We're guided by **AI principles** to build tools that are **human-centered**, and designed to help students and teachers in their daily lives.

[Responsibilities](#)



Our technology is built with **multilayered safeguards** and **never stops protecting** your digital safety.

[Safety](#)





Adaptive learning is predicted to
become the future of education

Source: [How To Adapt to the Reality of Adaptive Learning in Schools and Colleges](#), eLearning Industry, March 2020.



Adaptive learning....

“Adaptive learning refers to a teaching method that adapts to the needs of each individual learner, adjusting the pace and difficulty of instruction to optimise the learning experience.”

Adaptive learning can power student potential



Personal learning

Make each lesson more personal.



Instructional impact

Amplify educator impact.



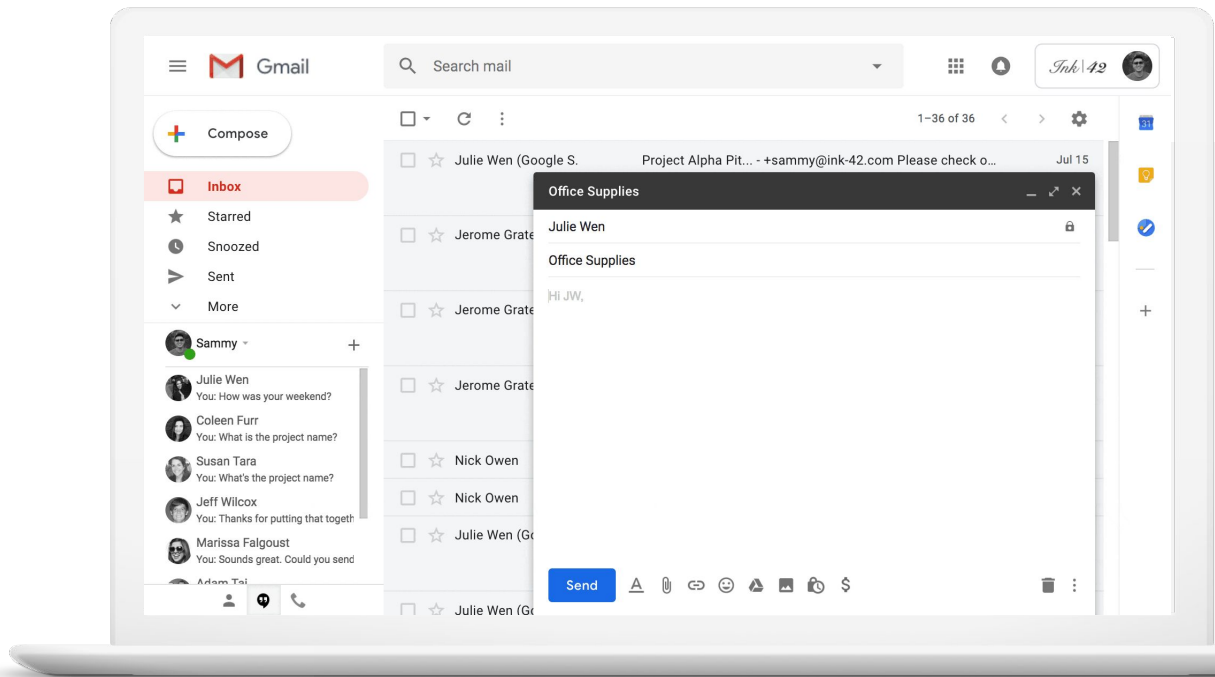
Scaled support

Scale secure learning tools to every student.

How AI is helping...

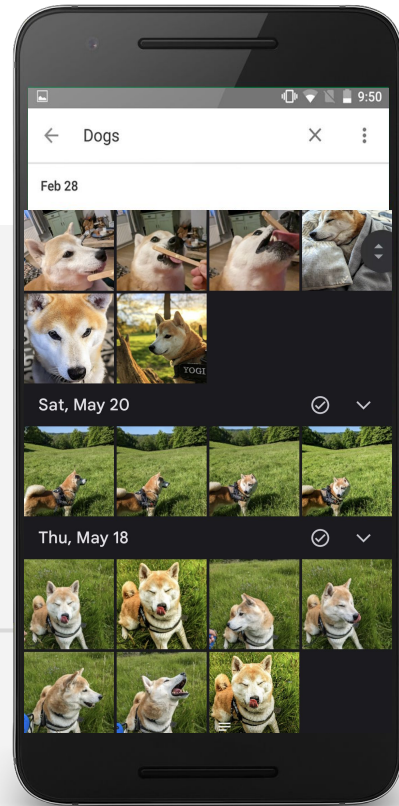


Helping us finish sentences





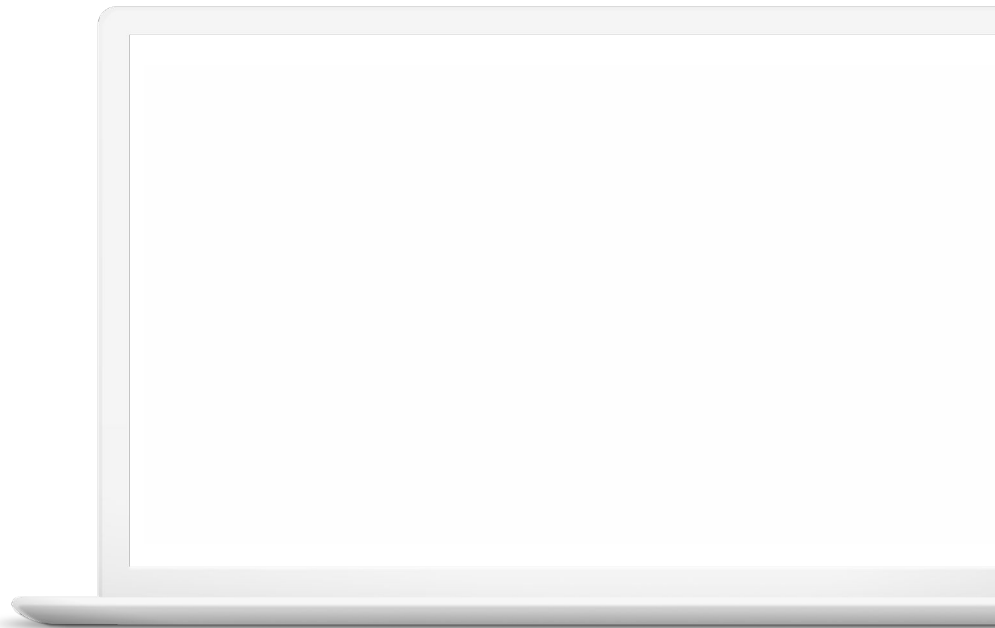
Helping us
preserve memories.
(*Just search with
natural language...*)





Build stronger connections

Powered by AI, noise
cancellation reduces
distractions





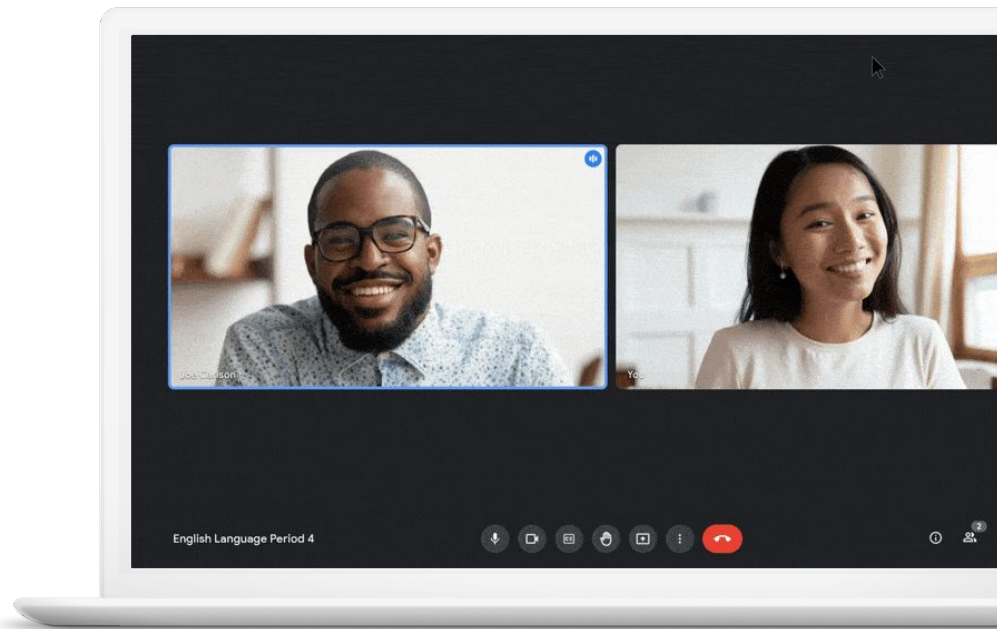
quickdraw.withgoogle.com



Build stronger connections

Expand participation with live-translated captions

- Remove language barriers with live-translated captions
- Enable students, guest speakers, and educators with different native languages to engage more easily
- Available from English into Spanish, Portuguese, French, and German





Enrich experiences

Writing tips in Docs and assisted analysis in Sheets

- Help guide students' writing with warnings about offensive language and stylistic suggestions in Docs. Admins can easily turn this off in the Admin console.
- Reduce the fear of doing analysis with formula suggestions in Sheets.

The screenshot shows a Google Sheets interface with a spreadsheet titled "Elective: Business 101". The spreadsheet has columns labeled B through G. The data is organized as follows:

Product	Production cost	% total cost
A1001	\$14.00	0.73%
A1002	\$599.00	
A1003	\$29.00	
A1004	\$59.00	
A1005	\$599.00	
A1006	\$25.00	
A1007	\$599.00	
A1008	\$3.00	
Total	\$1,927.00	

A mouse cursor is pointing at the cell containing "0.73%", which is highlighted with a blue border. The spreadsheet interface includes a menu bar (File, Edit, View, Insert, Format, Data, Tools, Add-ons, Help, Accessibility) and a toolbar with various formatting and editing tools.



Education
Plus



Teaching and
Learning Upgrade

Google Workspace
for Education

Power student potential with practice sets

Transform new and existing content into
personalised and interactive assignments
in Classroom.



And now, share practice sets
with other educators in your district

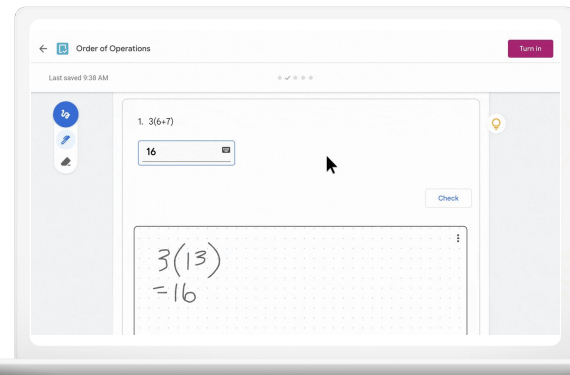
www.c-learning.net

Teachers can upload
PDFs and transform
them into interactive
practice sets



Google Classroom

Students get real-time
feedback and
in-the-moment hints



New....



Google for Education

Uses of practice sets

Create your own practice sets for your library



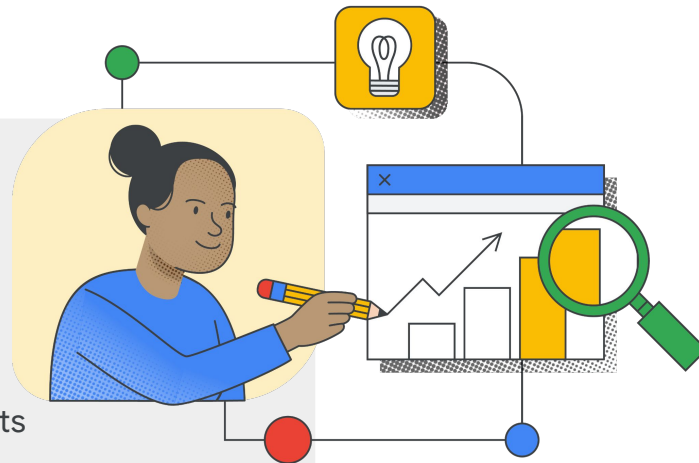
Authentic content to use in your college/organisation

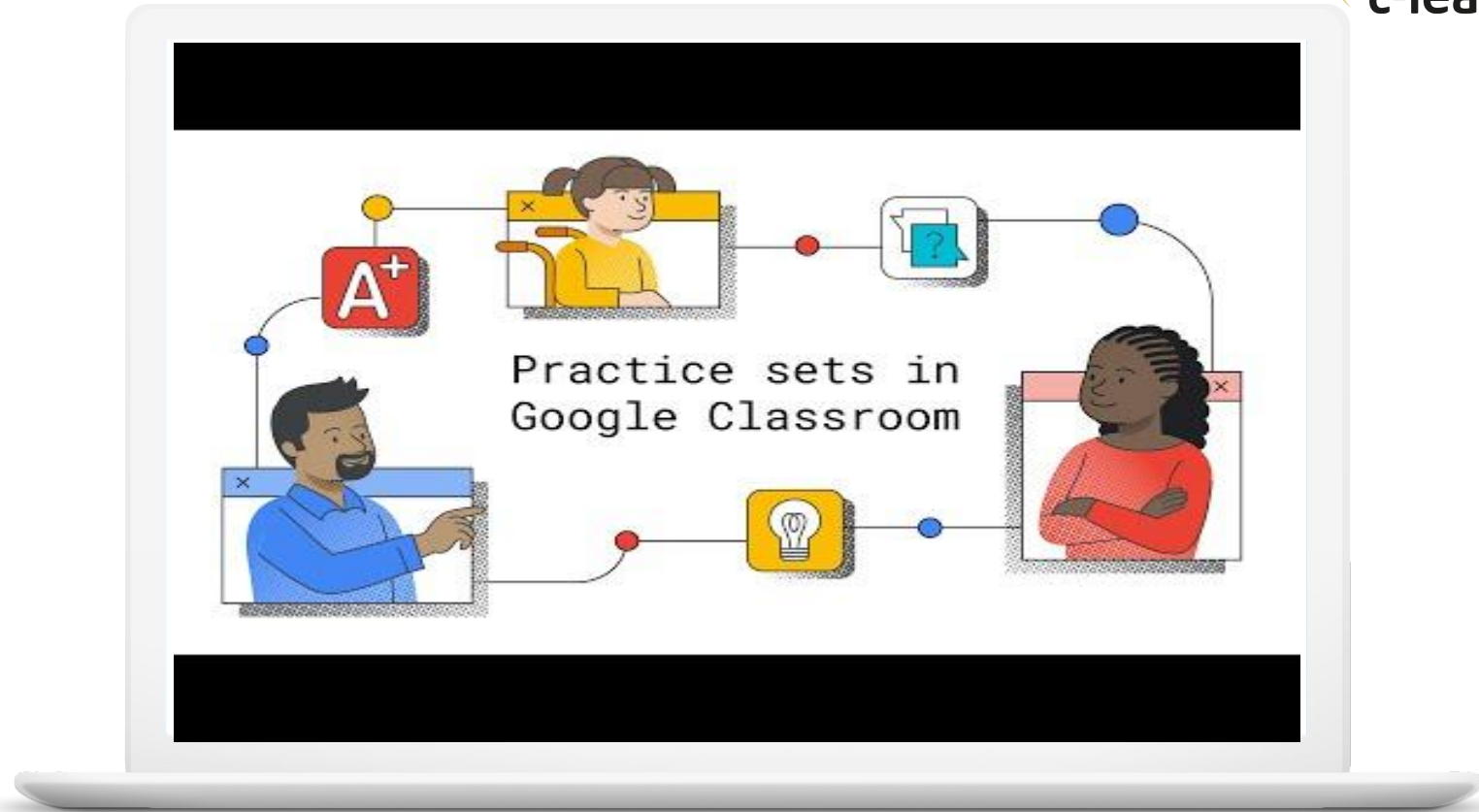


Share with colleagues as co-teachers & reuse assignments



Examples could include study guides, homework questions, revision practice



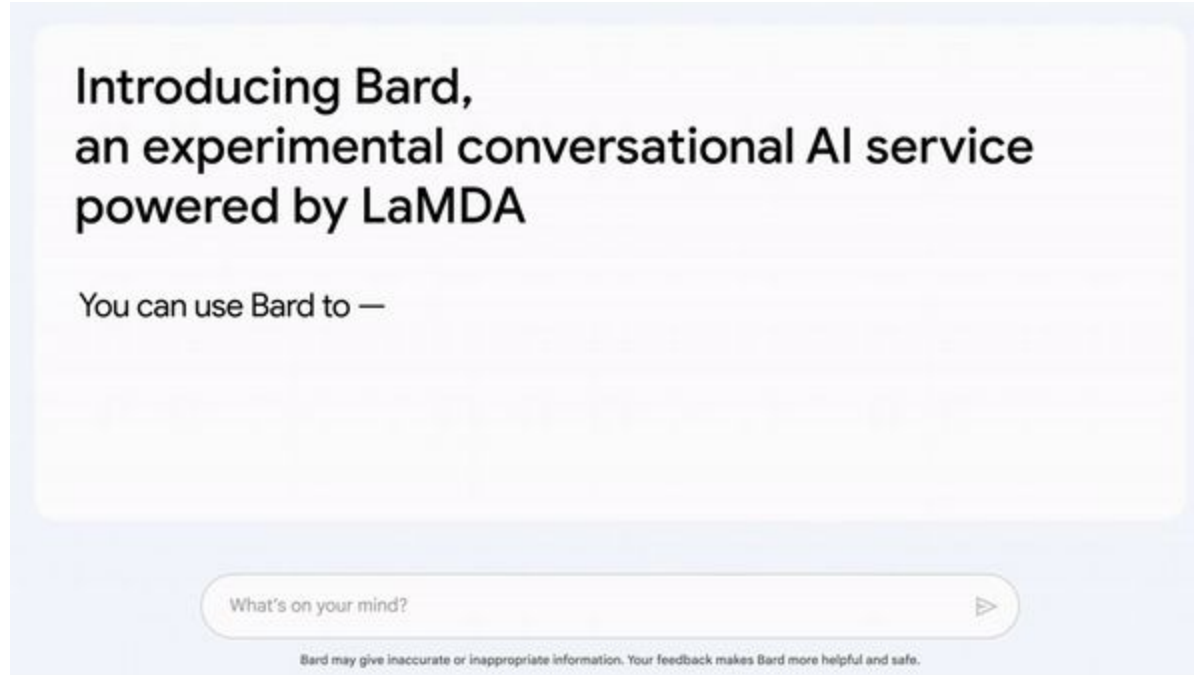


ChatGPT launched Nov 2022.

*Right now, more than 1 billion users,
but it wasn't built for education.*

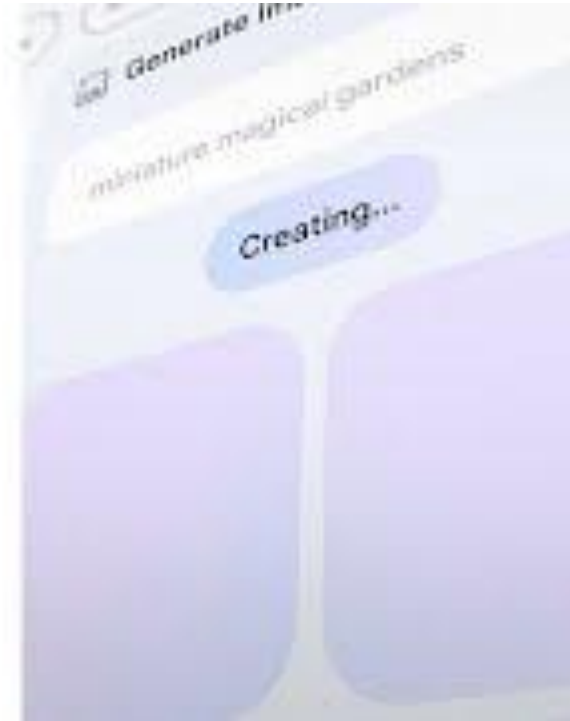


Have you met Google Bard?



Have you met Google Bard?

A new era for AI and
Google Workspace



Google for Education

Here are some ways that Google Bard can help teachers:

- **Create engaging lessons.** Bard can help teachers create engaging lessons by providing them with access to a wealth of information and resources. For example, Bard can be used to generate creative content, like poems, stories, and code. Bard can also be used to answer students' questions in an informative way, even if they're open-ended, challenging, or strange.
- **Personalise learning.** Bard can help teachers personalize learning by tailoring lessons to the individual needs of each student. For example, Bard can be used to generate different versions of a lesson, each with a different level of difficulty. Bard can also be used to provide students with feedback on their work, which can help them improve their understanding of the material.
- **Provide administrative support.** Bard can help teachers with administrative tasks, such as grading papers and creating lesson plans. For example, Bard can be used to generate rubrics to evaluate student work, and it can also be used to create transcripts of student conversations.



We believe that advances in technology can help create a future in which learning is **personal, flexible, and accessible,** and teachers get time back.





Start your journey with
Google and adaptive learning.

Scan the QR Code.



www.c-learning.net



Before we wrap up...

We don't like to make predictions but....

We'd like to leave you with one final thing.

www.c-learning.net

AI for Education



Education-specific large language models.
A safe, hyper-local AI platform.
Natural language voice computing.

**Welcome to the next great leap in teaching
and learning.**

Some of the current pioneers....



Val Verde
Unified School District

www.c-learning.net



MERLYN MIND



Special offer for the BLC community today.

AI in a box with Merlyn Mind, set up, support, impact.

Scan the QR code to get started or follow this link

<https://tinyurl.com/vvaubnna>



www.c-learning.net



Thank you



Jamie Smith

Executive Chairman

@CloudBusiness9



Steven Hope

CEO

@Hope_Steven

Email Connect [@c-learning.net](mailto:connect@c-learning.net)
www.c-learning.net